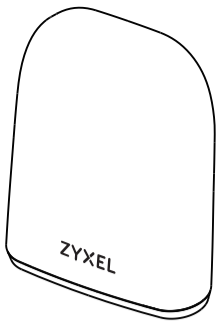


Quick Start Guide

ENGLISH

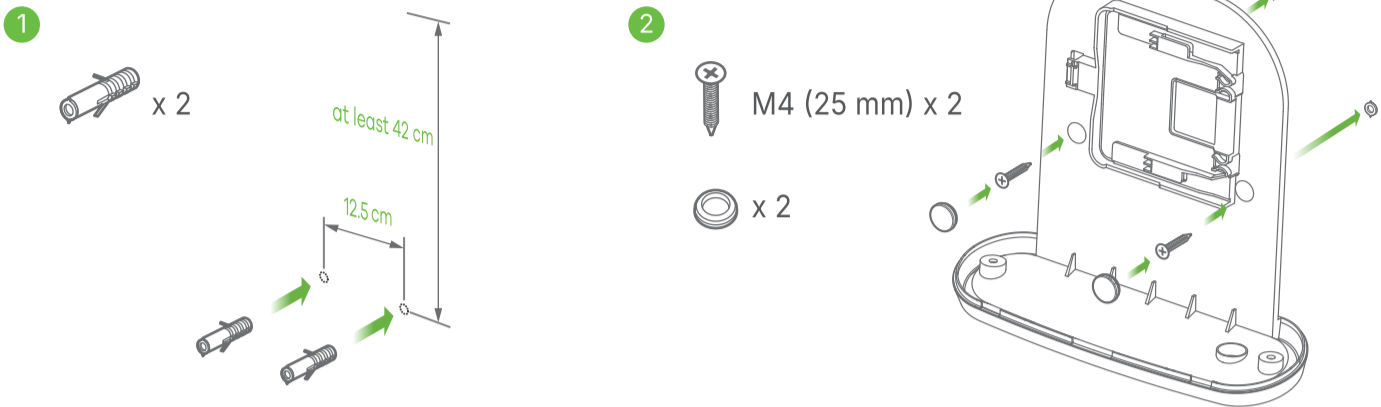
Large Weatherproof Enclosure Kit
Wall Mounting



Note: The Weatherproof Enclosure requires at least 42 cm of open space above it for proper installation. Install the Weatherproof Enclosure vertically with the connector hole facing down.

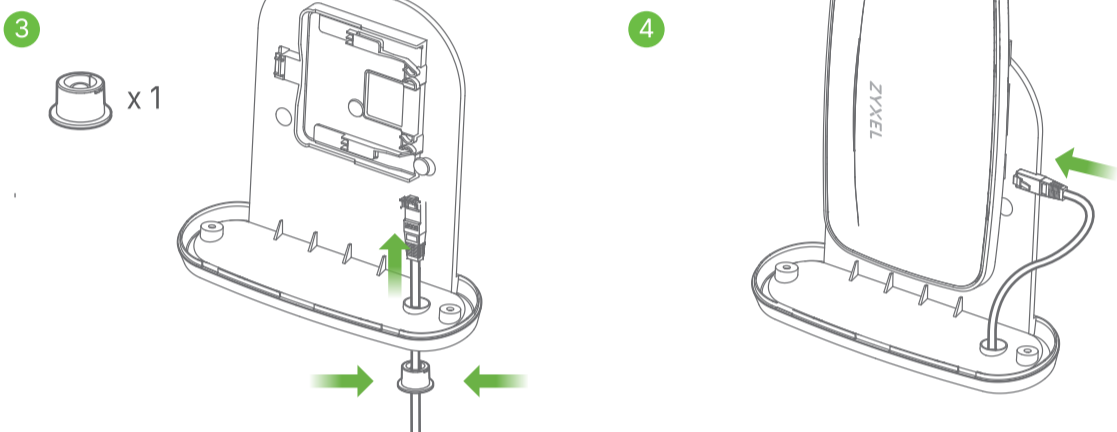
- 1 Drill two holes at a distance of 12.5 cm from each other and insert the masonry plugs.
- 2 Fasten the M4 drywall screws through the holes on the inner case and into the plugs to secure it to the wall. Seal the screws with rubber plugs.

Inner Case Installation



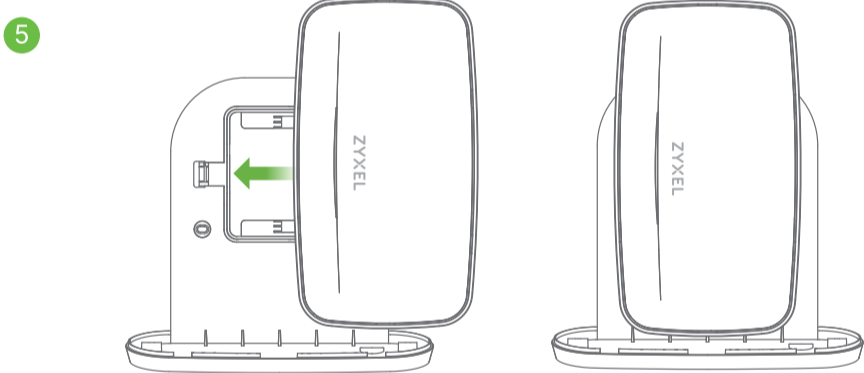
- 3 Put the Ethernet cable through the inner case hole and seal the hole with a rubber plug.
- 4 Connect the Ethernet cable to the AP.

Ethernet Connection



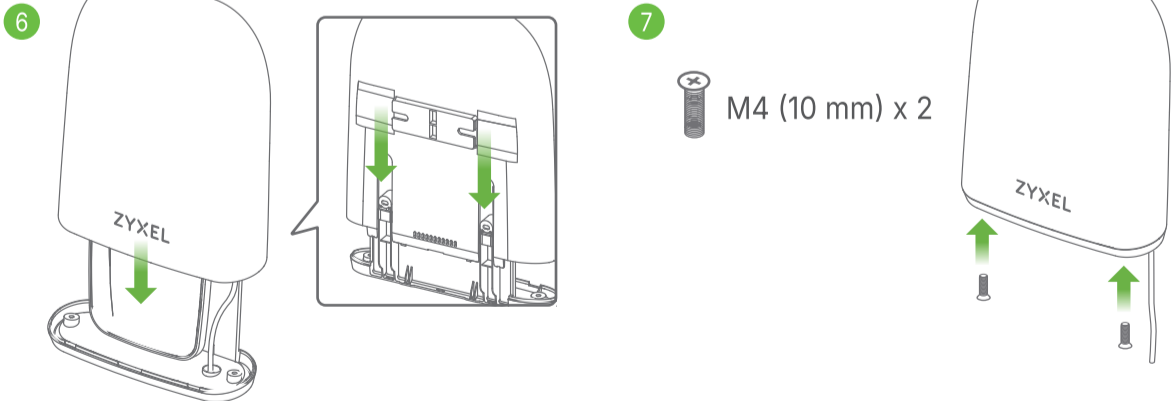
- 5 Attach the AP to the inner case by pushing it in until it clicks into place.

AP Placement on Inner Case



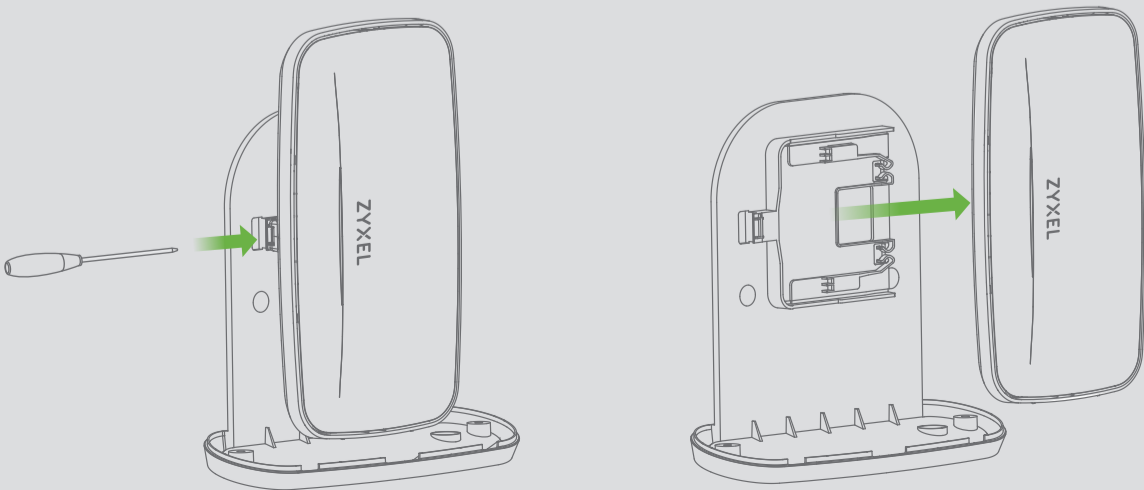
- 6 Slide the outer case gently over the inner case.
- 7 Screw the outer and the inner case together with the M4 machine screws.

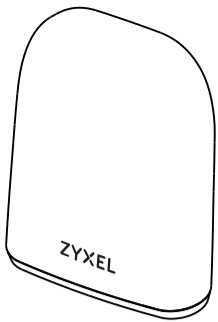
Outer Case Placement



How to release the AP

- 1 Insert a thin flat tool (such as a flat screwdriver) to push down the AP lock. Push the AP outward to release.





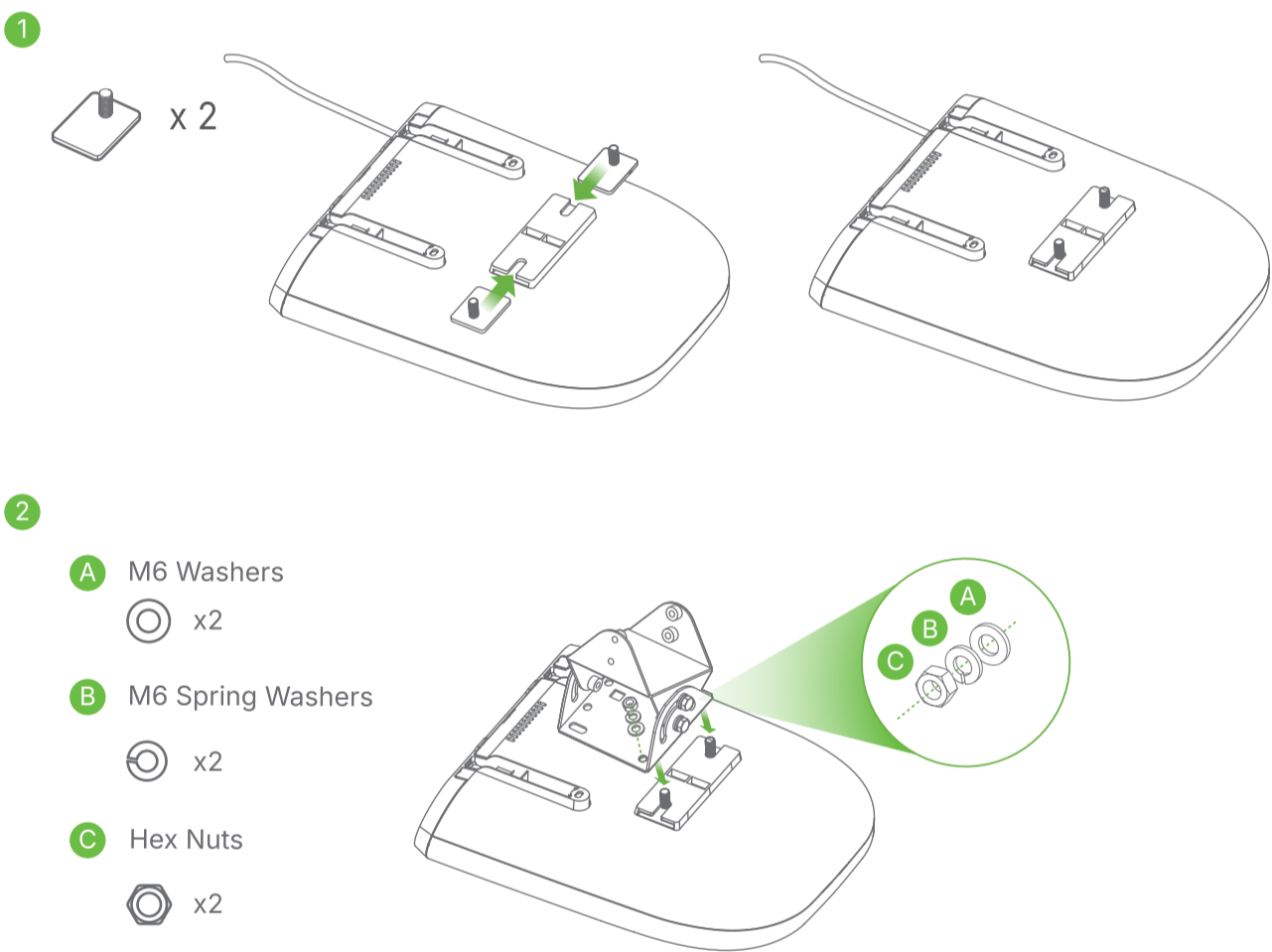
Seal the inner case's wall mounting holes with two rubber plugs.
Repeat steps 3 to 7 of the Weatherproof Enclosure Kit Wall Mounting QSG to prepare the AP for pole mounting.

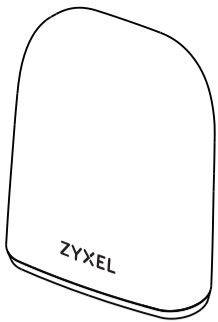
Mounting Preparation



- ① Insert two radome brackets into the slots on the outer case's back panel.
 - ② Use A, B and C to attach the rotating bracket to the outer case's back panel.
- Note:** Make sure the AP is turned off. Disconnect the PoE injector from the power outlet.

AP and Rotating Bracket Assembly





- ① Use the four corner holes of the M bracket to mark holes on a wall. Drill four holes in a wall.
- ② Insert the nylon wall plugs and screws into the holes.
- ③ Secure the M bracket to the wall.
- ④ Secure the AP to the M bracket.

Wall Mounting

①

A

Nylon Wall Plugs

x4

25.4

8.0

Unit: mm

A

②

95 mm

95 mm

95 mm

95 mm

③

B

M Bracket

x1

C

Tapping Screw M4×25 mm

x4

9

25.4

4.0

2.38

Unit: mm

B

C

④

D

M6 Hex Bolts x12 L

x4

E

M6 Spring Washers

x4

F

M6 Washers

x4

D

E

F

D

E

F

- ① Use A, B and C to attach the brackets to the pole.
- ② Use D, E and F to attach the AP with the port facing down to C on the pole. Do not tighten the bolts too much.

Pole Mounting

①

A

M6 Hex Bolts x90L

x4

B

Flat Brackets

x2

C

M Bracket

x1

A

B

C

B

C

②

D

M6 Hex Bolts x12 L

x4

E

M6 Spring Washers

x4

F

M6 Washers

x4

D

E

F

D

E

F

See the User's Guide at www.zyxel.com for more information, including customer support and safety warnings.

US Importer: Zyxel Communications, Inc | 1130 North Miller Street Anaheim, CA 92806-2001 | <https://www.zyxel.com/us/en/>
Copyright © 2025 Zyxel and/or its affiliates. All Rights Reserved.

3/3